

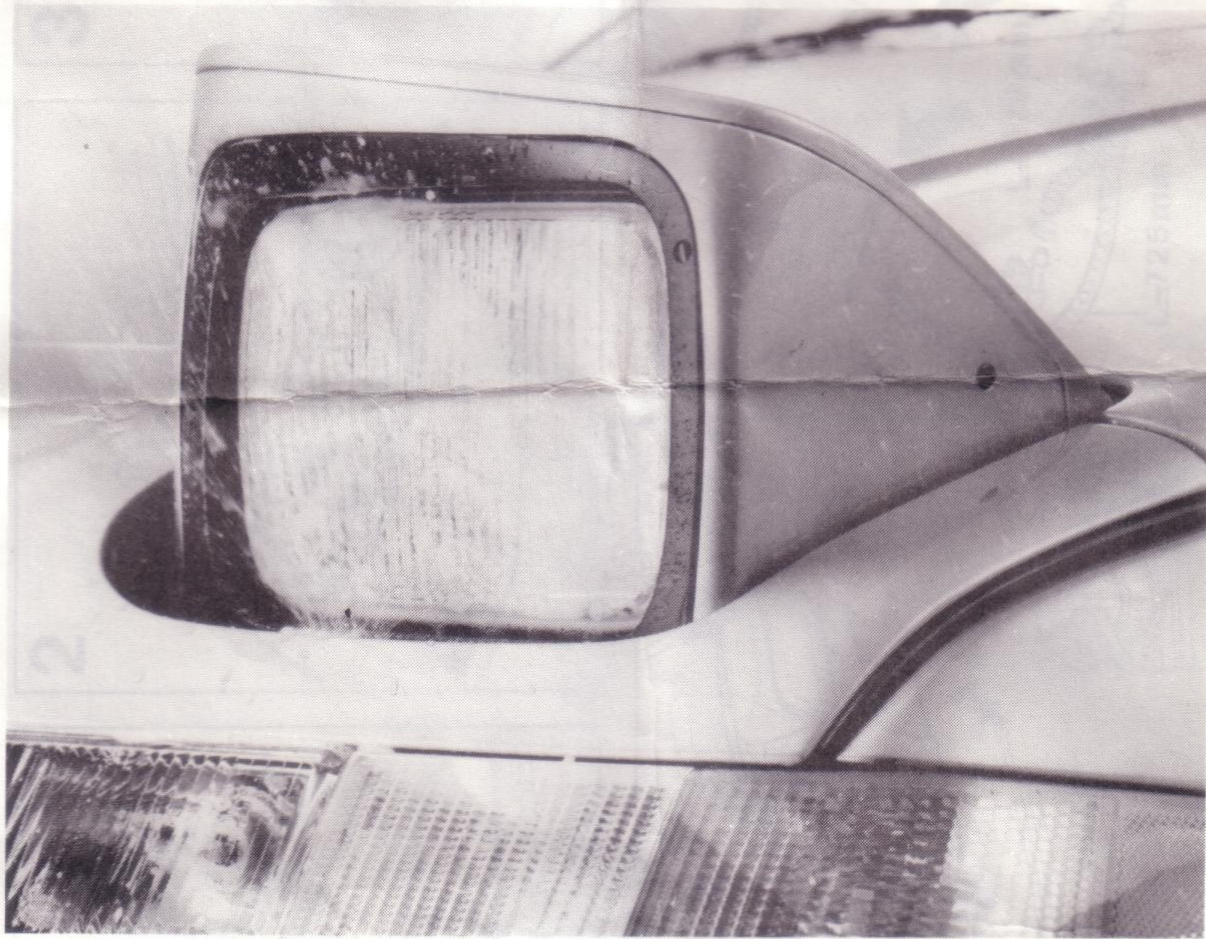
PRODUKT	AVD.	GRUPP	NR.	DATUM
PRODUCT	SECTION	GROUP	NO.	DATE
ERZEUGNIS	ABT.	GRUPPE	NR.	DATUM
PRODUIT	SECTION	GROUPE	NO.	DATE
P	3	36	309	OKT. 87

Monteringsanvisning Einbauanleitung
Installation instructions Notice de montage

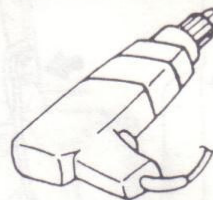
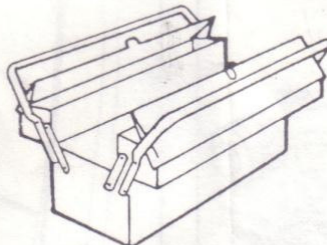
KOPLAMP SPROEIER SET
STRÅLKASTARRENGÖRARE SATS
HEADLAMPWASHER

SCHEINWERFER SPÜLER
LAVE PHARES
LAVAPARAFARO

Volvo 480 serie

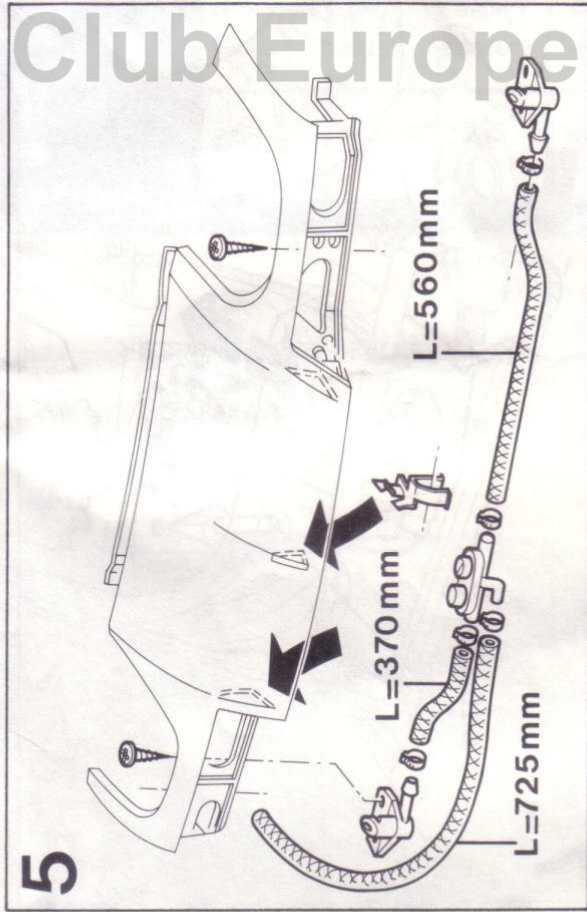
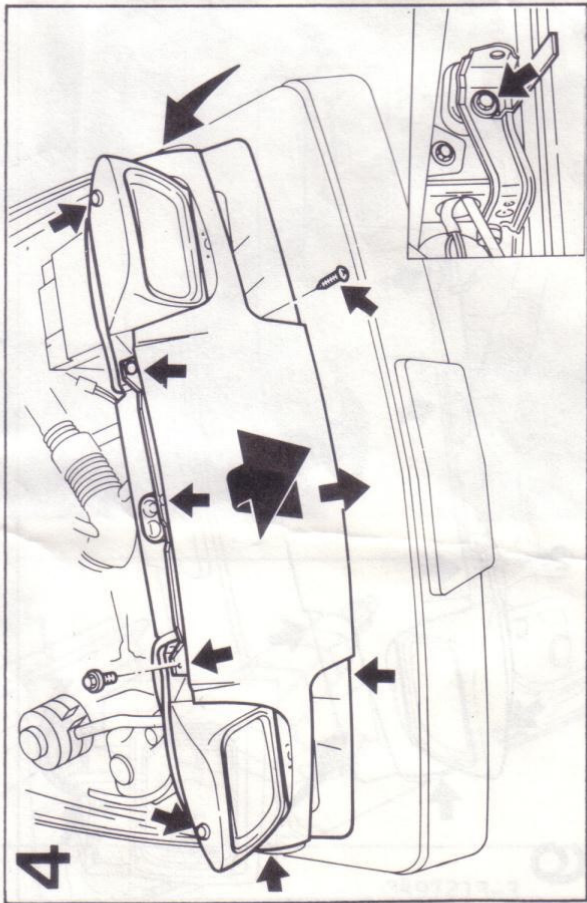
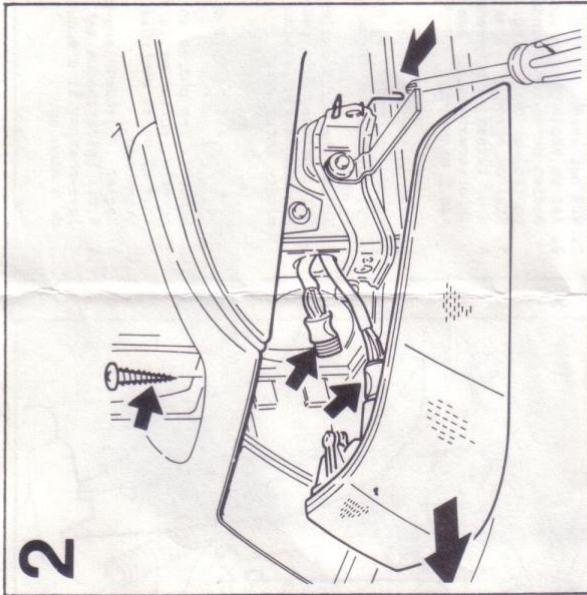
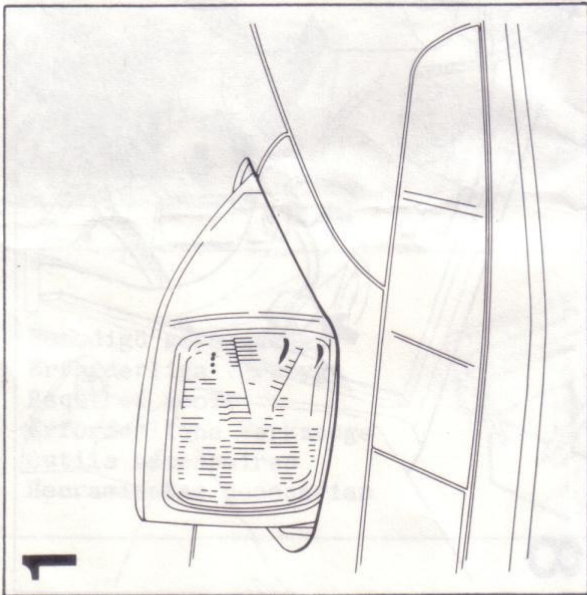


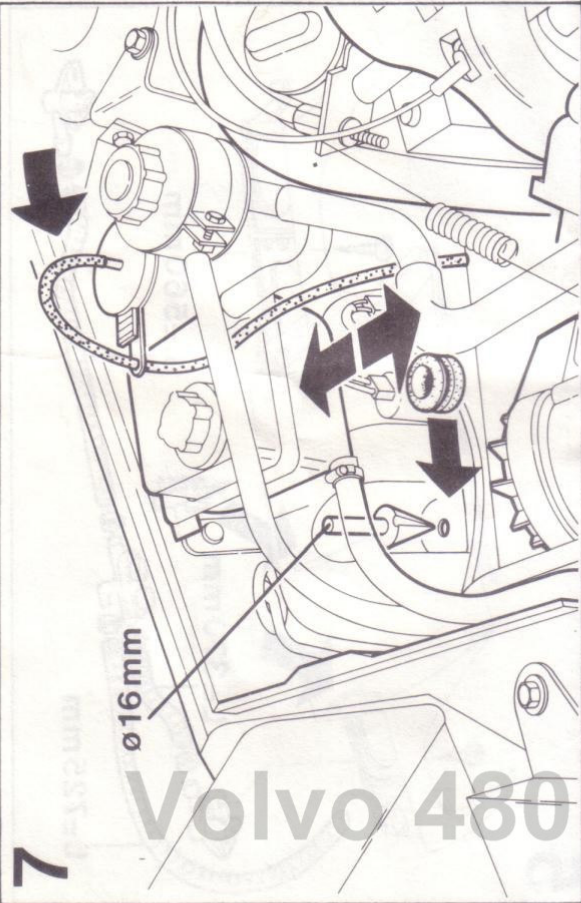
Benodigd gereedschap
Erforderliga verktyg
Required tools
Erforderliche Werkzeuge
Outils nécessaires
Herramientas necesarias



3497213-3

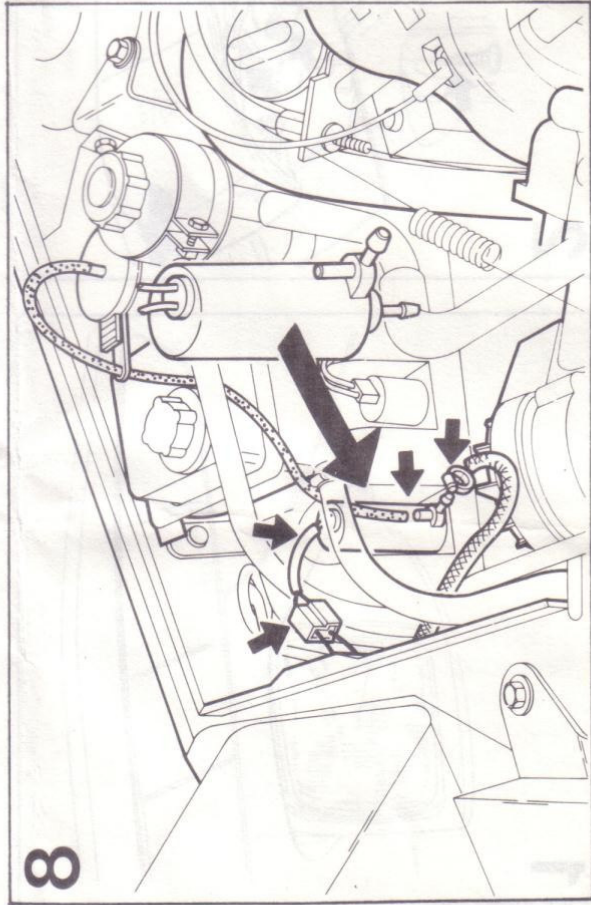
1/3





ø16 mm

Volvo 460



- | | |
|---|---|
| <p>7</p> <ol style="list-style-type: none"> 1. Vull het sproeier reservoir. 2. Zet de koplampen in open stand, bedien de sproeierhendel en controleer de werking. 3. Stel de sproeier straal af. 4. n.b. tussen elke gewenste koplamp sproeierwerking is een interval van 5 minuten. | <ol style="list-style-type: none"> 1. Fyll spolarreservoaren. 2. Ställ strålkastarna i utfållt tillstånd, vrid spolarhandtaget och kontrollera verkan. 3. Stång av spolarstrålen. 4. OBS: Mellan varje önskad strålkastarspöining ligger en intervall på 5 minuter. |
| <ol style="list-style-type: none"> 1. Fill up the reservoir. 2. Raise the headlights, operate the washerlever and check the function. 3. Adjust the spraynozzles. 4. Note: between each desired headlamp spray session is a 5 minute interval. | <ol style="list-style-type: none"> 1. Waschwasserbehälter füllen. 2. Scheinwerfer aufklappen, Washerhebel betätigen und Wirkung kontrollieren. 3. Wascher-Strahl einstellen. 4. Anmerkung: Zwischen zwei Scheinwerfer-Waschvorgängen liegt eine Pause von 5 Minuten. |
| <ol style="list-style-type: none"> 1. Remplir le réservoir du lave-glace. 2. Basculer les phares en position ouverte, actionner la manette du lave-glace et contrôler le fonctionnement. 3. Régler le jet des lave-phares. 4. N.B.: Entre chaque action des lave-phares, il s'écoule un délai de 5 minutes. | <ol style="list-style-type: none"> 1. Llenar el depósito del lava-parabrisas. 2. Poner los faros en posición levantada, accionar la palanca del lavaparabrisas y comprobar su funcionamiento. 3. Ajustar los chorros del lava-faros. 4. Nota: Entre cada funcionamiento del lavafaros transcurre un intervalo de 5 minutos. |